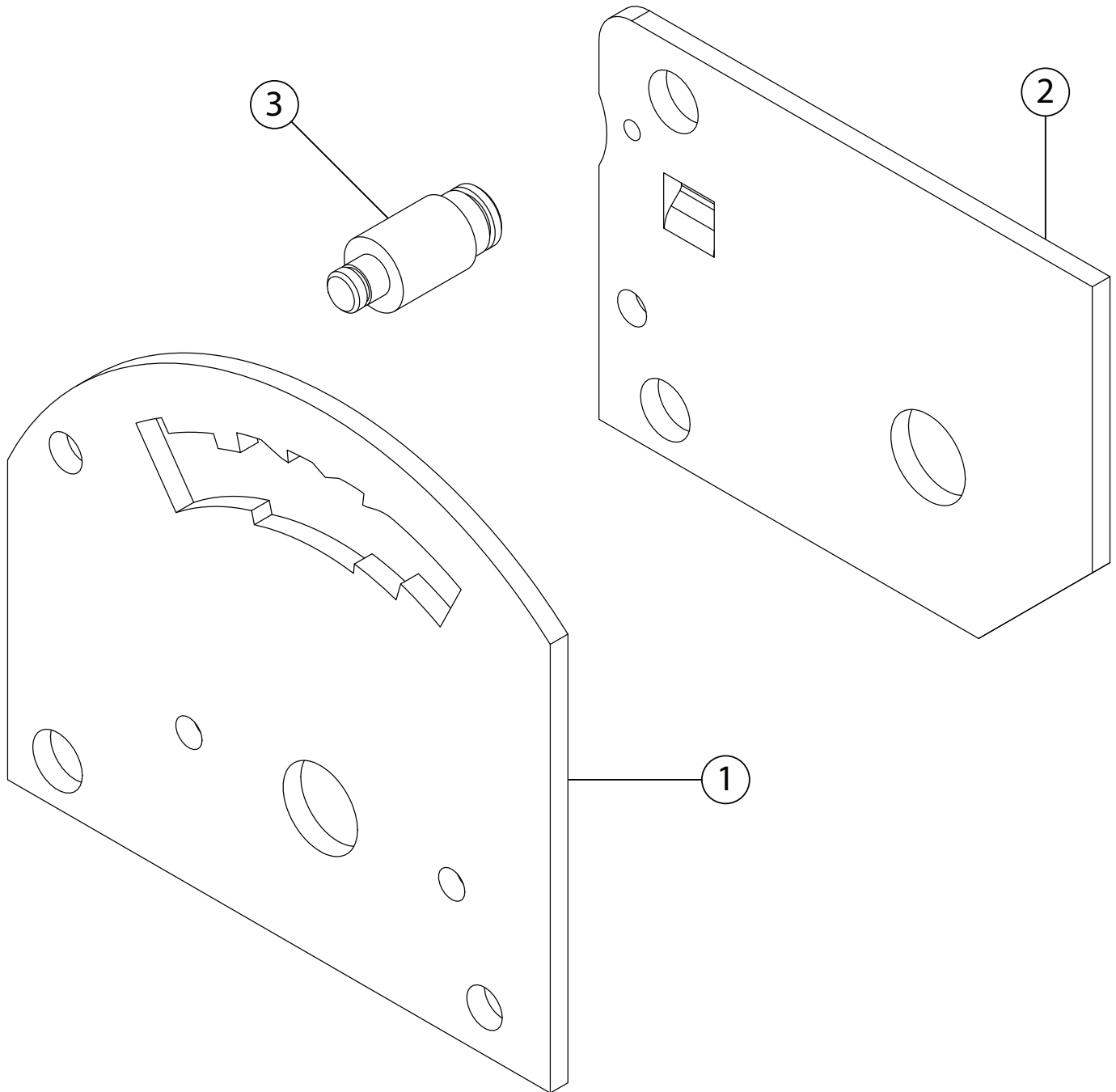


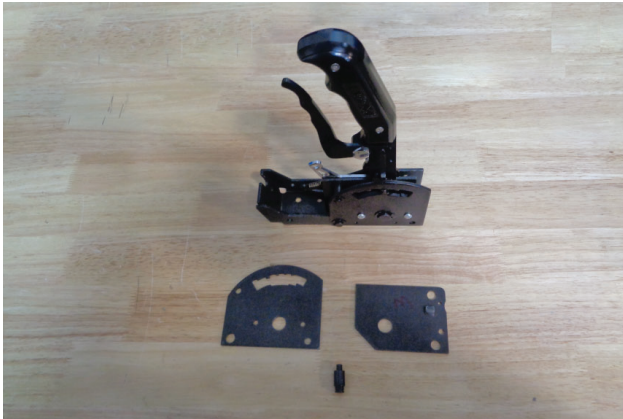


Installation Instructions
80733
FITS PRO STICK & STREET BANDIT
MODELS
3 Speed Off Road Pattern Gate Plate Kit



ITM #	PART #	DESCRIPTION	QTY.
1	4001760	Gate Plate	1
2	4001762	Lockout Delete Plate	1
3	4001770	Shaft	1

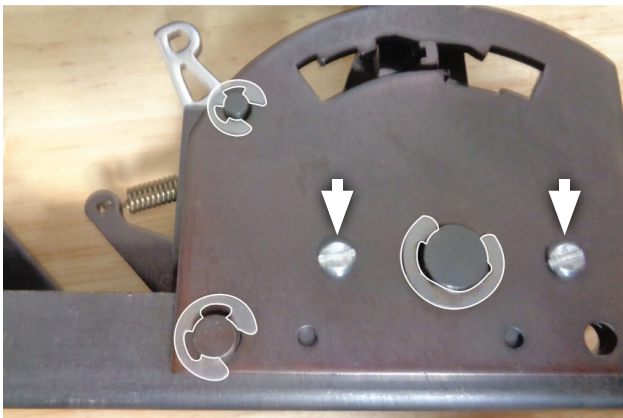
OVERVIEW:



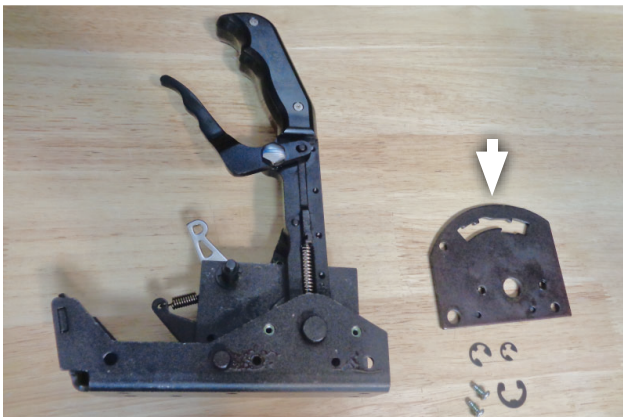
1. Please take a moment to read and understand these instructions before installing your purchased performance kit.

NOTE: Please inventory all parts before starting the installation process and call our tech line to report any missing parts. This will help avoid potentially stranding your vehicle until any missing replacement parts arrive.

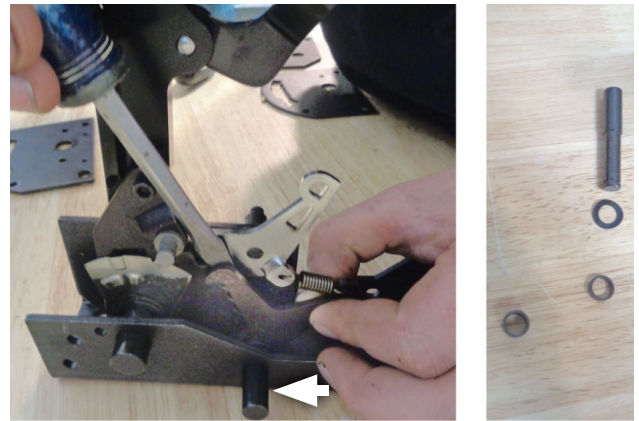
DISASSEMBLE SHIFTER:



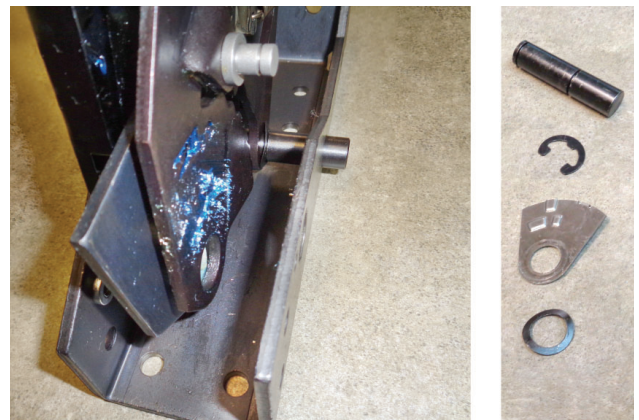
2. Carefully remove screws (x2) and e-clips (x3) securing gate plate to shifter for later re-use.



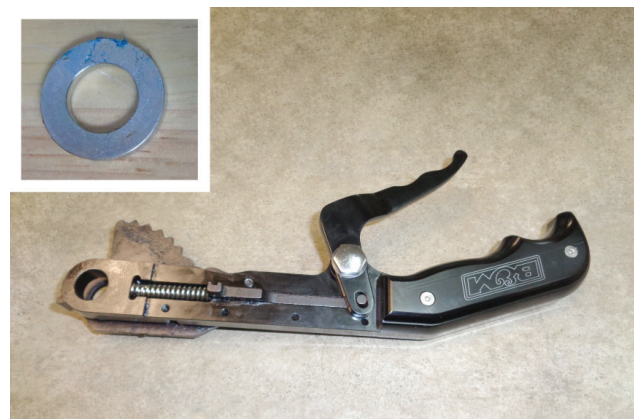
3. Remove gate plate from shifter.



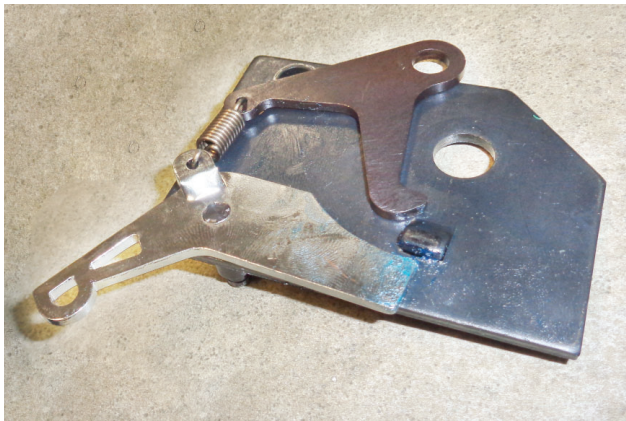
4. Disengage detent arm from detent plate, then remove small pin, spring washer and spacers (x2). (parts re-assembled same order in step 14)



5. Remove e-clip, spring washer, actuator and large pin.



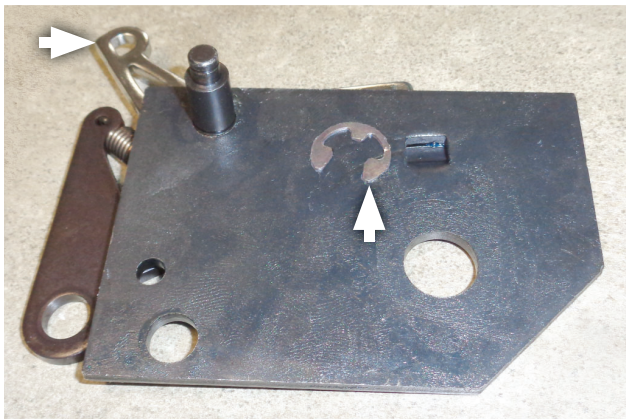
6. Remove shift handle assembly and spacer.



7. Remove reverse lockout assembly.

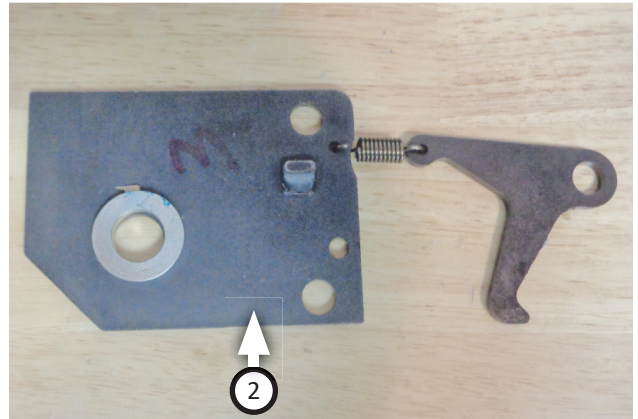


8. Disconnect detent arm spring from lockout arm.

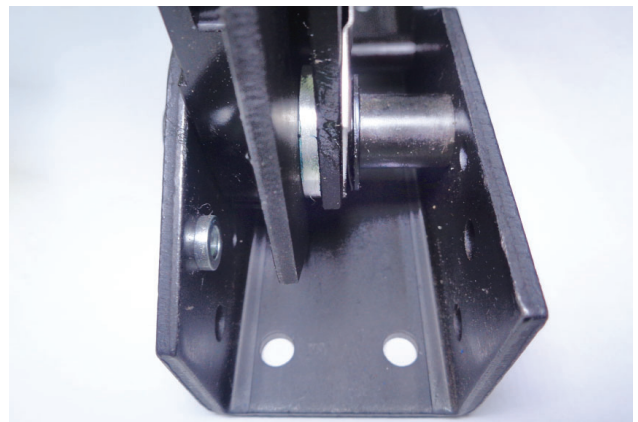


9. Remove e-clip from pin then remove lockout arm from reverse lockout plate. Pin, arm and plate will not be re-used.

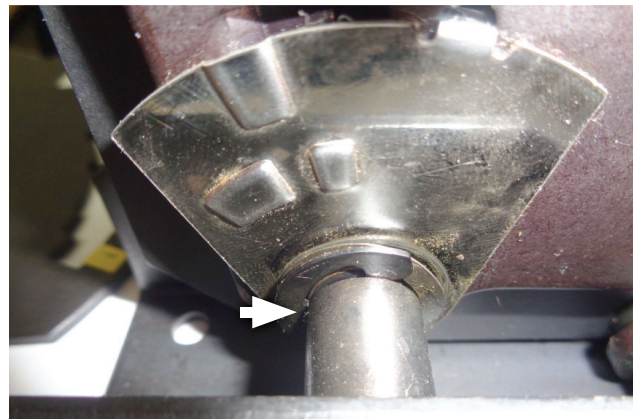
INSTALL OFF ROAD PATTERN GATE PLATE:



10. Attach detent arm spring to **lockout delete plate (2)** then place spacer (removed step 7) on top.



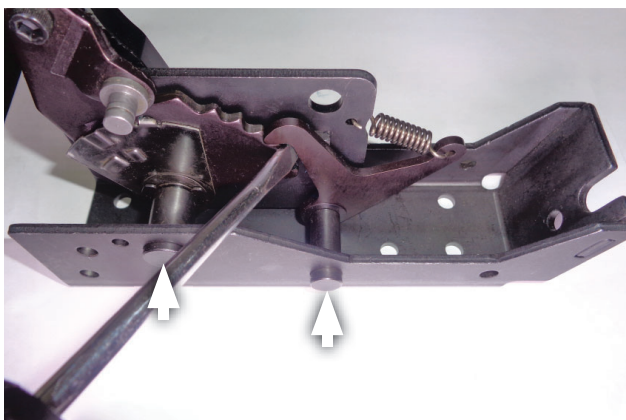
11. Insert large pin through base, spring washer, actuator, shift handle assembly, washer and lockout delete plate (removed step 5 and 6).



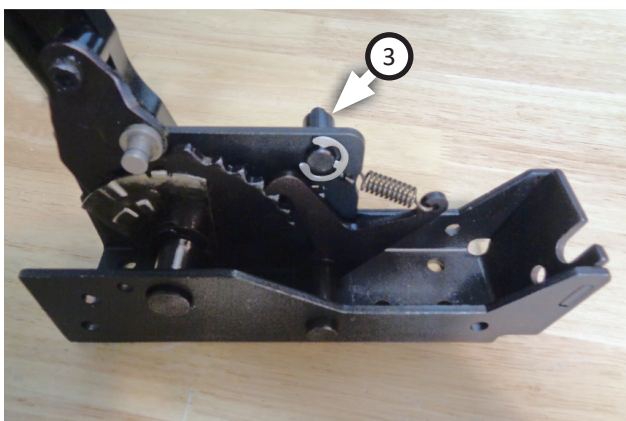
12. Secure assembly by installing e-clip (removed step 6) into groove on large pin.



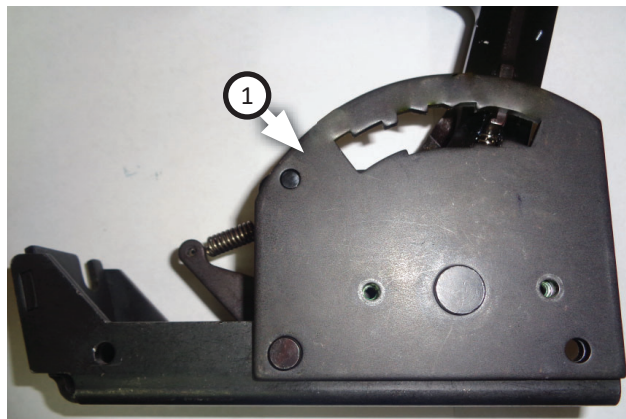
13. Insert small pin through shifter assembly in this order; base, spring washer, detent arm, small washer, lockout delete plate and large spacer. (removed step 5)



14. Raise shift handle, push pins fully into base then push detent arm onto shift handle detent plate.



15. Insert **shaft (3)** into lockout delete plate as per drawing, then install e-clip (removed step 10) onto shaft.



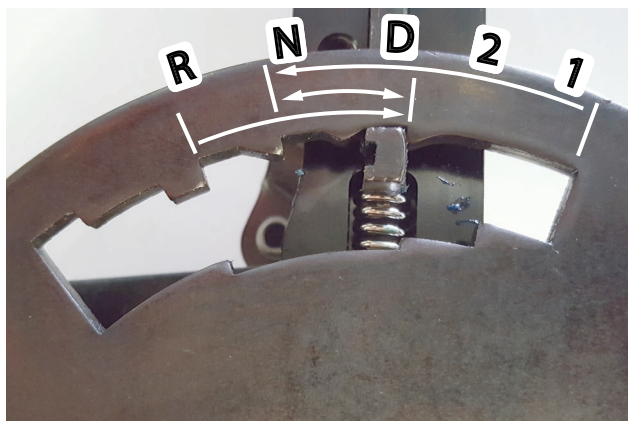
16. Place **gate plate (1)** onto shifter assembly, align pins to holes, then lightly squeeze trigger until it sets in place.



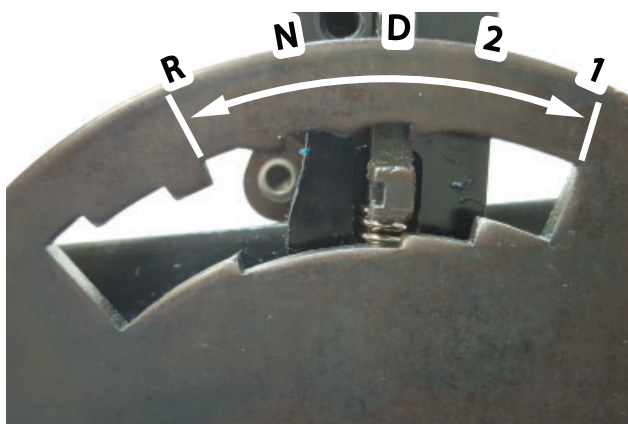
17. Install e-clips (x3) onto pins (at snap ring grooves) and install screws (x2) (removed step 3) to secure gate plate to shifter.

OFF ROAD GATE PLATE FUNCTIONS:

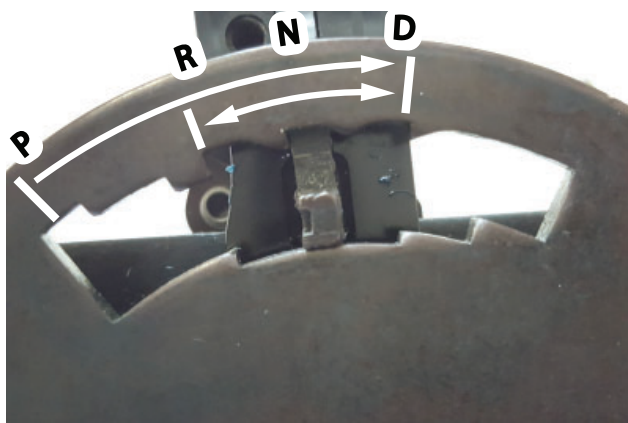
The B&M 3 Speed Off Road Gate plate is designed with off-road utility specifically in mind. In particular, the gated shifter and trigger mechanism make selecting between certain gears easier which can help a driver traverse tough terrain. Read and understand the following operation details before you take your vehicle for a drive and engage your Pro Stick Shifter.



Without engaging the trigger, you can shift easily between "Neutral" and "Drive", from "Reverse" through to "Drive" or from "1" through to "Neutral".



You will need to partially engage the trigger when shifting to park. If fully engaging trigger while pulling backward from "Drive"; driver will encounter a positive stop in "2" to avoid gearing down too rapidly.



Fully engaging the trigger will allow shifting from "Park" to "Drive" and from "Drive" to "Reverse", which can be very useful, particularly when escaping ruts, deep snow and mud.



Congratulations, the installation of your Off Road Pattern Gate Plate is now complete!

