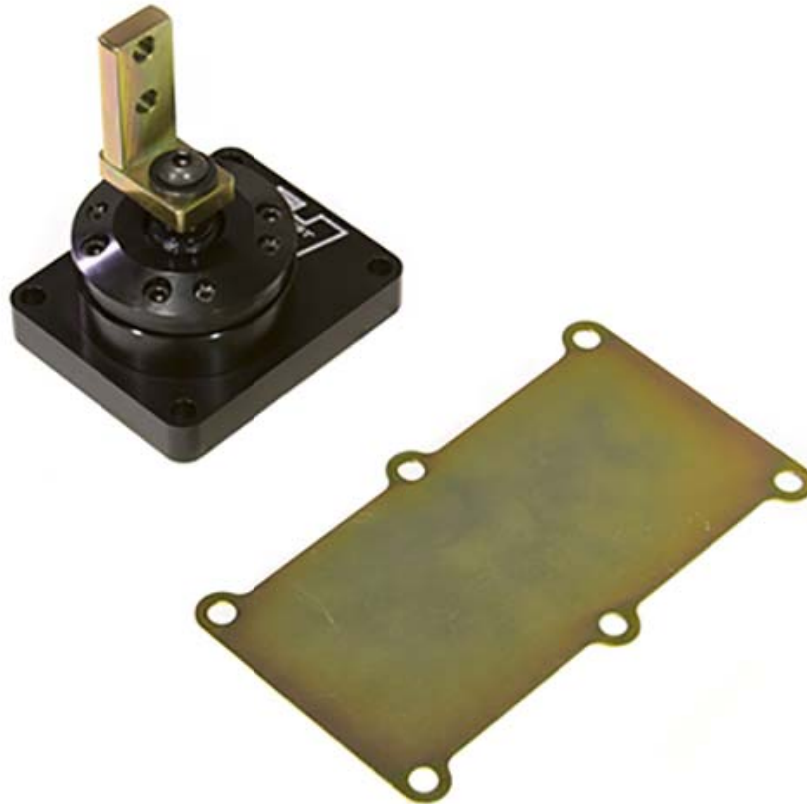


WORK SAFELY! It is recommended that the installation be performed prior to installing the transmission in the vehicle. If you are installing in a transmission already in the vehicle, for maximum safety, perform on a clean, level surface and with the engine turned off. Place blocks or wedges in front of and behind both rear wheels to prevent movement in either direction.

CLEANLINESS! It is critical to perform this work in clean environment to ensure that dirt, dust or other contaminants don't get introduced into the transmission case.



DISASSEMBLY

1. Shift unit into neutral position. Remove four (4) Mid shift cover bolts from transmission housing.



2. Remove six (6) bolts from stock shifter



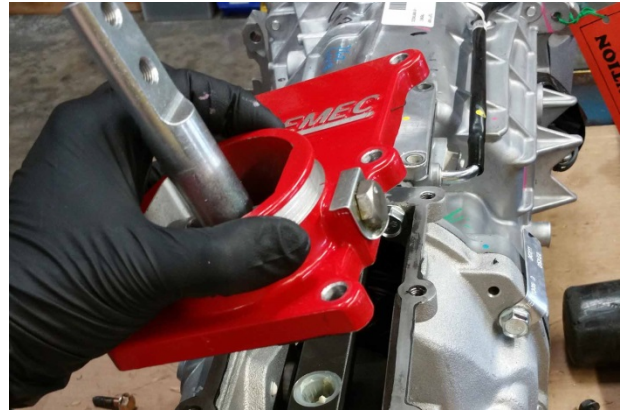
3. Remove shifter boot from stock shifter



4. Use rubber mallet to jar stock shifter loose.



5. Remove stock shifter.



6. Use rubber mallet to jar cover plate loose and remove.



7. Apply a small amount of white lithium grease to the shifter ball. If this is a new transmission you can wipe some off the stock shifter and use this.



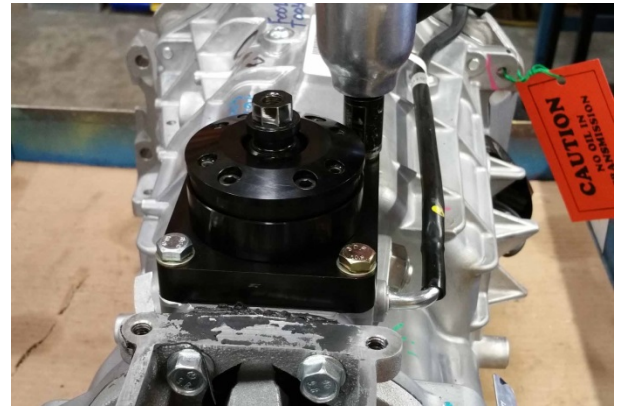
8. Apply a small amount of white lithium grease to the socket in the transmission. Again, if this is a new transmission you can wipe some off the stock shifter and use this.



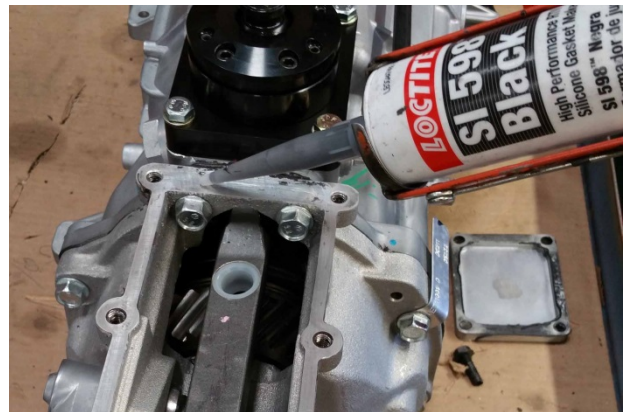
9. Apply a bead of RTV to Seal shifter flange before mounting.



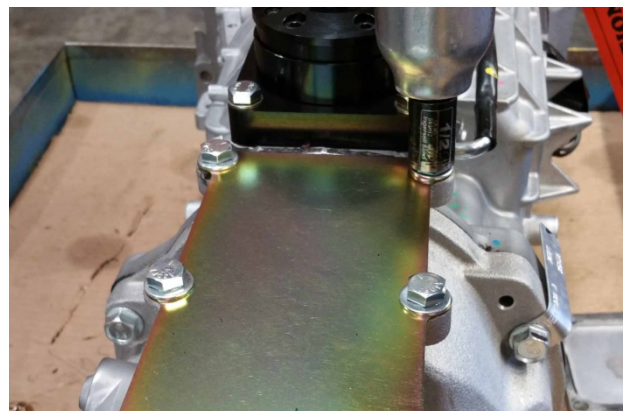
10. Bolt midshifter in place using supplied hardware. Note that longer bolts go in top left and bottom right holes



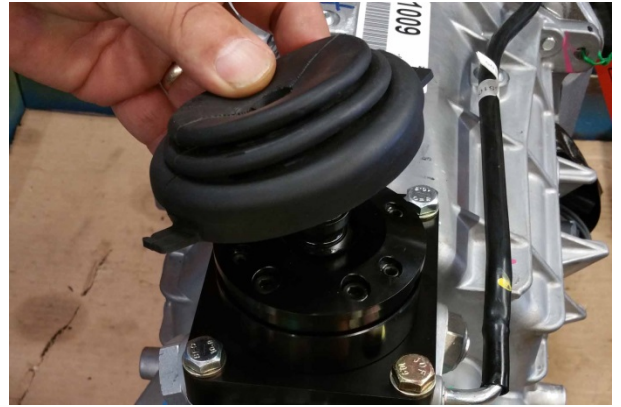
11. Apply a bead of RTV to rear cover flange.



12. Install rear cover and bolt in place using supplied hardware.



13. Install original shifter boot back onto to midshifter.



14. Install offset stick mount using supplied hardware.



15. Installation is complete and ready to place into the vehicle.



IMPORTANT: RETAIN THESE INSTRUCTIONS FOR FUTURE REFERENCE

Technical Service

A highly trained technical service department is maintained by Hurst Driveline Conversions to answer your technical questions, provide additional product information and offer various recommendations.

Technical service calls, correspondence, and warranty questions should be directed to:



Hurst Driveline Conversions

(707) 544-4761

WWW.HURST-DRIVELINES.COM