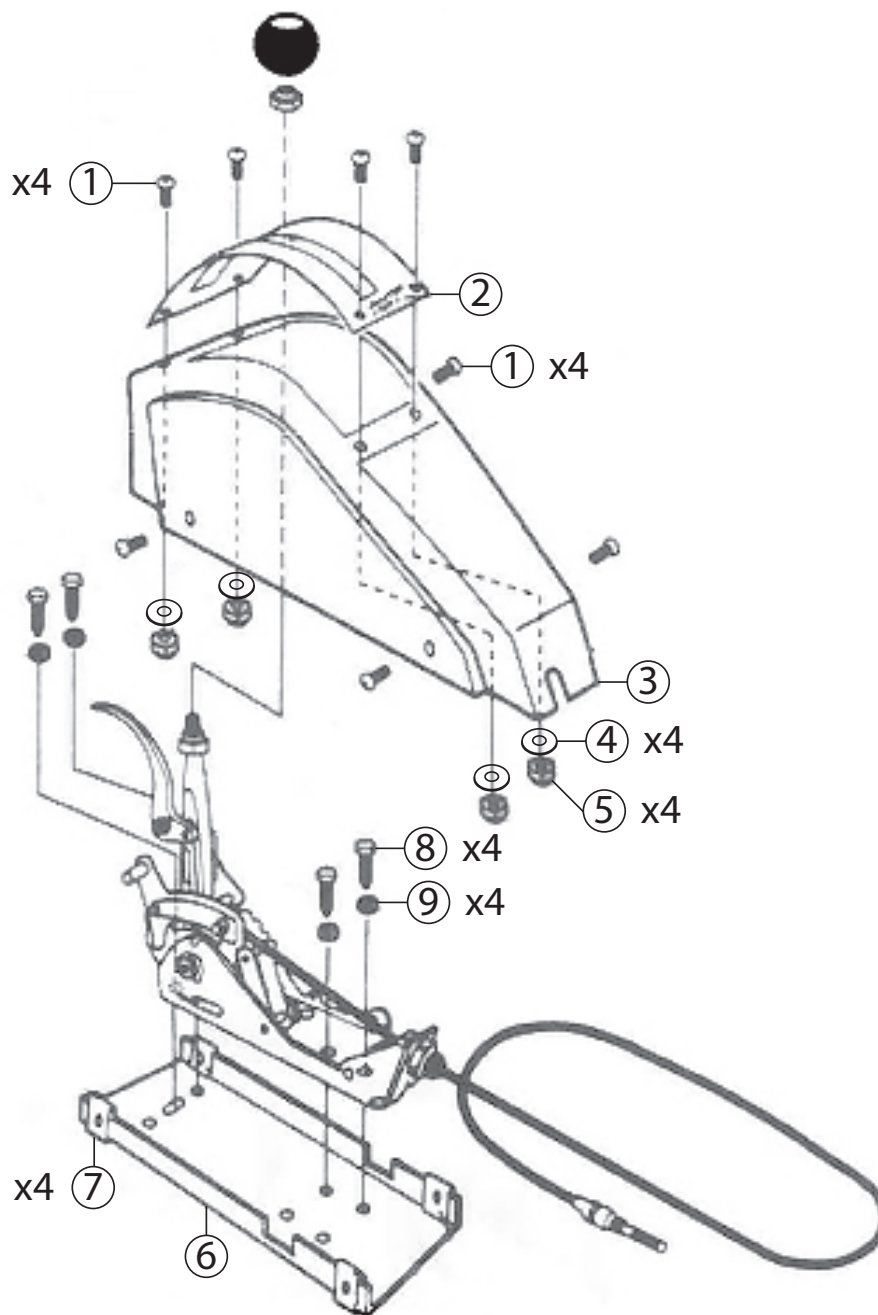




Installation Instructions
1300056
 FITS HURST QUARTER STICK 2
 SHIFTERS WITH REAR CABLE EXIT



ITM #	PART #	DESCRIPTION	QTY.
1	3400940	#8-32 x 3/8" Btnhd Screw	8
2	1958652	Plate- Gear Shifter Indicator	1
3	1400020	Console	1
4	3401298	#8 Flat Washer	4
5	97002566	#8-32 Nylock Nut	4

ITM #	PART #	DESCRIPTION	QTY.
6	1958640	Mounting Plate- Console	1
7	1790088	U-type Speed Nut	4
8	2725699	#14 x 1" Hex Hd Screw	4
9	3400108	1/4" Flat Washer	4
10	1320026	Gear Shift Indicator Decal (not shown)	4

OVERVIEW:



1. Take a moment to read and understand these instructions before installing your Hurst Quarter Stick 2 Console Cover.

NOTE: Please inventory all parts now before continuing and if necessary, report any missing items to our tech line. This will avoid potentially stranding your vehicle until any missing replacement parts arrive.

2. If you have purchased this kit along with a shifter, make sure you install shifter (following instructions) completely before installing this kit.

WARNING:

For maximum safety, perform this installation on a clean, level surface with engine turned off. Chock wheels and do not attempt installation until you are confident your vehicle will not move.

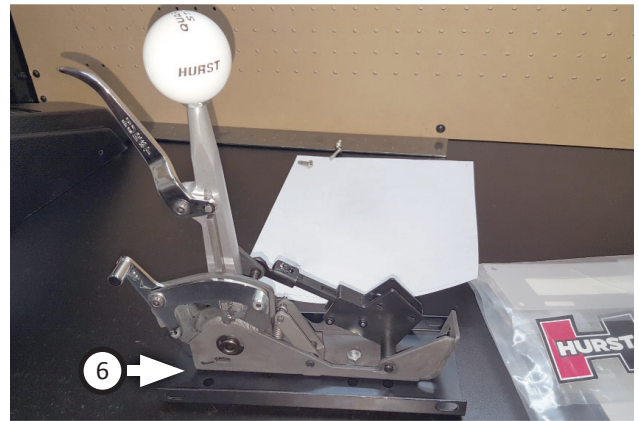
3. If Quarter Stick 2 shifter is equipped with a Neutral/Park Start safety switch, disconnect negative (-) battery cable.

WARNING:

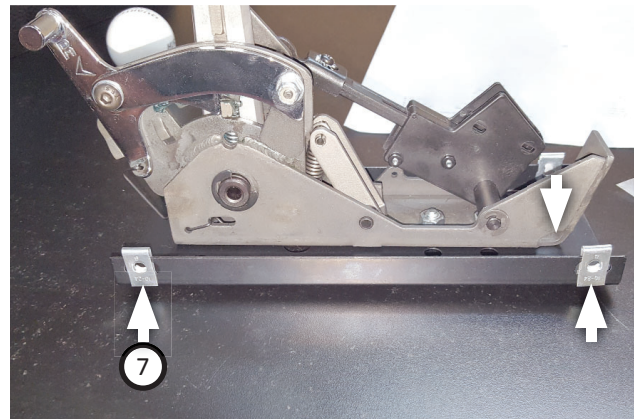
When removing or connecting the battery cable terminal, use care to avoid intermittent contact (arcing) between battery post and terminal end. This generates voltage spikes that can damage sensitive ECM (Electronic Control Modules) components or memory circuits.

4. Place shifter stick into "Neutral" position and remove assembly from vehicle.

INSTALL CONSOLE COVER:



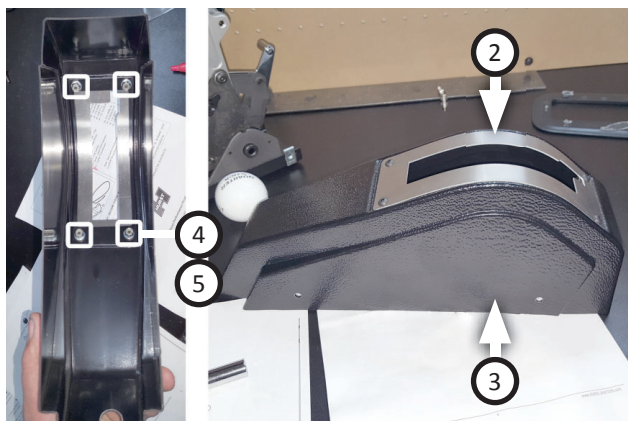
5. Place **console mounting plate (6)** under shifter frame and attach assembly to floor tunnel using same mounting holes securing shifter to floor tunnel. Fasten using (x4 ea.) **screws (8)** and **flat washers (9)**.



6. Install (x4) **u-shaped nuts (7)** onto both sides of mounting plate (extruded side toward inside of plate).

7. Remove knob from shifter stick. Place **console (3)** over shifter, with cut out for cable facing rearward, and align with mounting plate side holes. If console bottom contacts floor before mounting holes are aligned, trim it to fit. Once it fits properly, remove cover.

NOTE: To modify components for fit; mark each contact point then little at a time, trim just those particular points. Re-install to check for fitment and if necessary, repeat process until components fit comfortably, without compromising their function.



8. Place **gear indicator plate (2)** onto console, with slot for reverse lockout lever on driver side. Fasten forward portion of plate and console with (x2 ea.) **screws (1)**, **flat washers (4)** and **nuts (5)**.
9. Gently form top plate to contour of console top, then fasten rear portion of plate and console with (x2 ea.) **screws (1)**, **flat washers (4)** and **nuts (5)**.



10. Place console over shifter and attach to mounting plate using (x4) **screws (1)**. Thread knob onto shifter stick, turn to desired position and tighten jam nut against knob.
11. Verify shifter stick is in "Neutral" position. Move stick rearward one gear position and apply proper adhesive-back decal (letter or number) to indicate gear selection. Repeat this alignment procedure for existing gear selection.

NOTE: Decal should be cut to size in order for letter or number to be applied easily onto console top plate. Peel backing off of decal then place it onto top plate, working slowly to avoid creating air pockets. Carefully remove top layer from decal.

12. Move shifter through all gears, ensuring each one engages properly for proper function.
13. If applicable, re-connect negative (-) battery cable.



Congratulations, the installation of your **Hurst Quarter Stick 2 Console Cover** is now complete!

